



ON BIOO

Features

- Space-saving 26" (660 mm) tall design.
- Produces up to 1469 lbs (668 kg) of ice per day.
- *Harvest Assist* provides consistent ice production for the life of the ice maker while reducing energy consumption and increasing capacity.
- *Pure Ice*® exclusively by Ice-O-Matic. Built-in antimicrobial protection for the life of the ice maker inhibits bacteria growth on ice maker surfaces. Ice-O-Matic's optional water filtration system provides protection against unpleasant tastes, odors and scale formation.
- Durable, electroless nickel plating on all evaporator plates ensures

Options & Accessories

WATER FILTERS			
Ice Machine Model	Manifold		Inline
	System	Replacement	System
ICE1406	IFQ2	IOMQ (2)	n/a
ICE1405			
ICE1407			

Ice Maker Warranty

Every Ice-O-Matic ice maker is backed by a warranty that provides both parts and

Ice Form



CUBE

FULL CUBE DIMENSIONS	
W x D x H (in.)	7/8 x 7/8 x 7/8
W x D x H (mm)	22 x 22 x 22
HALF CUBE DIMENSIONS	
W x D x H (in.)	3/8 x 7/8 x 7/8
W x D x H (mm)	10 x 22 x 22

Bin Chart *Kits for Combining Wider Bins with Smaller Models*

ICE STORAGE BINS											
Model No.	B25	B40	B42	B55	B70	B90	B100	B120	B150	B170	
Capacity	242 lbs (110 kg)	344 lbs (156 kg)	351 lbs (160 kg)	510 lbs (232 kg)	741 lbs (337 kg)	1023 lbs (465 kg)	854 lbs (388 kg)	1142 lbs (519 kg)	1447 lbs (658 kg)	1807 lbs (821 kg)	
Width	30 in (762 mm)	30 in (762 mm)	22 in (559 mm)	30 in (762 mm)	30 in (762 mm)	30 in (762 mm)	48 in (1219 mm)	48 in (1219 mm)	60 in (1524 mm)	60 in (1524 mm)	
Kits	ICEO400	n/a					Kit Not Required				
	ICEO405	n/a					Kit Not Required				
	ICEO406	n/a					Kit Not Required				

*See Ice-O-Matic Price List for Adapter Kits to combine ice makers with most available ice/beverage dispensers.

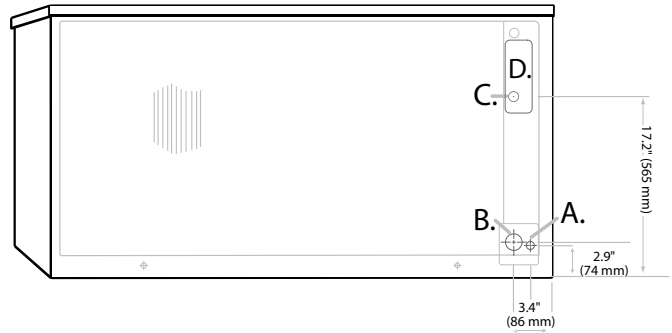
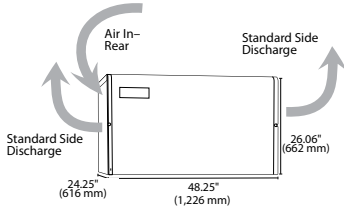


ICE1406/1405/1407 CUBE ICE MAKER

Air Cooled

Please note: air-cooled units require 6" (152 mm) clearance for air intake and exhaust.

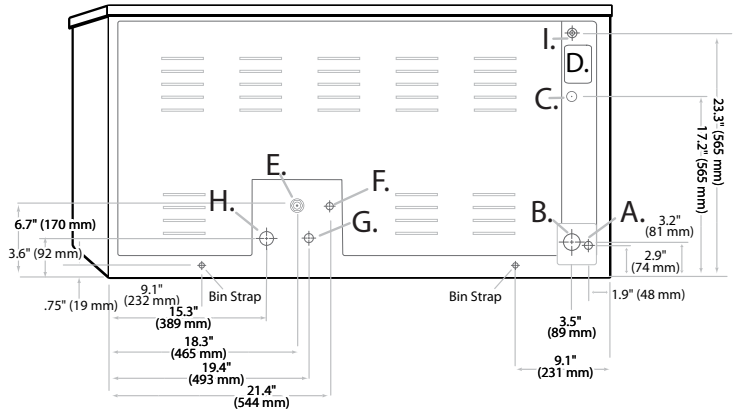
- A. Ice maker potable water in, 3/8" FPT.
- B. Ice maker water out, 3/4" FPT.
- C. Hole for electrical connections, 7/8".
- D. Electrical junction box.



Air Cooled

Water Cooled/Remote

- A. Ice maker potable water in, 3/8" FPT.
- B. Ice maker water out, 3/4" FPT.
- C. Hole for electrical connections, 7/8".
- D. Condenser water in, 3/8" FPT (water only).
- E. Condenser water out, 1/2" FPT (water only).
- F. Liquid line, 3/8" male quick connect coupling for precharged line set (remote only).
- G. Discharge line, 1/2" male quick connect coupling for precharged line set (remote only).
- H. Hole for remote electrical connections, 7/8" (remote only).



Water Cooled & Remote

Operating Requirements

	MINIMUM	MAXIMUM	
		60 Hz	50Hz
Ambient Temp. Range Air	50°F (10°C)	100°F (38°C)	110°F (43°C)
Water Temp.	40°F (4.4°C)		
Water Pressure	20 PSIG (1.4 BAR)	60 PSIG (4.1 BAR)	

Dimensions

ALL MODELS	
W x D x H (in.)	48.25 x 24.25 x 26.06
W x D x H (mm)	1,226 x 616 x 662

Specifications

Model Number	Cond. Unit	Ice Production per 24hrs		Water Usage gallons per 100 lbs of ice 90°F air/70°F water		kWH Used per 100 lbs of ice @ 90°F air/70°F water	Voltage Characteristics	Min. Circuit Ampacity	Fuse Size	Approx. BTUs per hour
		70°F air/50°F water lbs (kg)	90°F air/70°F water lbs (kg)	Potable	Condenser					
ICE1406A★	Air	1,469 (668)	1,136 (515)	19.9	-	5.1	208-230/60/1	26.1	30	22,069
ICE1406R	Remote*	1,391 (632)	1,150 (523)	20.3	-	5.0		22.2		22,126
ICE1406W	Water	1,386 (630)	1,239 (563)	22.8	122	4.2	230/50/1	17.8	20	21,994
ICE1405A	Air	1,371 (623)	1,070 (486)	19.7	-	5.3		21.7		21,185
ICE1405R	Remote*	1,419 (645)	1,139 (518)	21.4	-	5.2	230/50/1	21.9	30	22,339
ICE1405W	Water	1,386 (630)	1,185 (539)	22.6	111	4.2		15.1		21,035
ICE1407A★	Air	1,458 (663)	1,131 (514)	19.6	-	5.0	208-230/60/3	16.0	20	21,761
ICE1407R	Remote*	1,393 (633)	1,195 (543)	20.0	-	4.8		14.7		22,547
ICE1407W	Water	1,425 (648)	1,270 (577)	22.4	117	4.1		10.7		22,308

*Requires Remote VRC 2661 Condenser.

NOTES:

Number of Wires: ICE1406/1405: 3 (including ground) • ICE1407: 4 (including ground)
 Approx. Shipping Weight lbs (kg): ICE1406A 310 (141) • ICE1406R 300 (136) • ICE1406W 280 (127) • ICE1405A 310 (141) • ICE1405R 300 (136) • ICE1405W 280 (127)
 ICE1407A 310 (141) • ICE1407R 300 (136) • ICE1407W 280 (127)
 Refrigerant Type: R404A

★ENERGY STAR qualified machine. Please see our website www.iceomatic.com for the latest list of ENERGY STAR qualified machines and available rebates